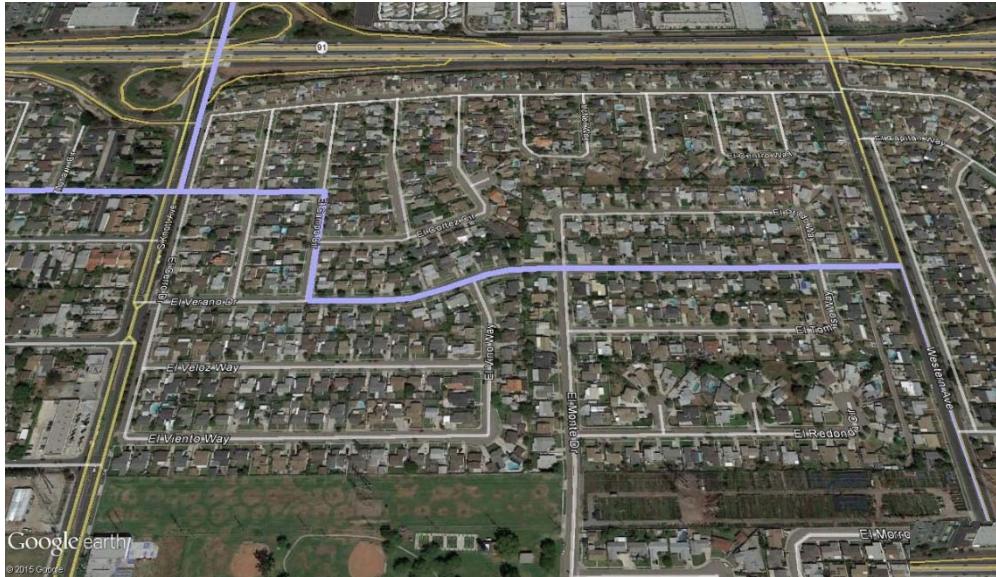


Comparison of plans NDC 4 and Coalition 2: SW area of Dist. 2

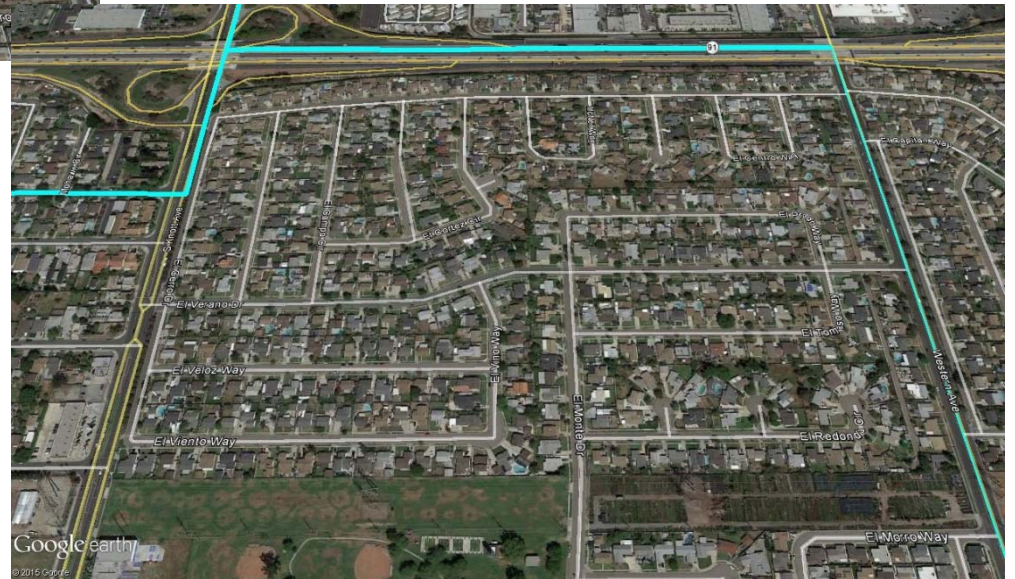
1



Coalition 2 map

Coalition 2 cuts through the middle of two residential blocks (where there is no road) to go from Houston St to El Campo Circle, then goes south along El Campo to El Verano Dr before turning east to Western Ave.

From Houston St., NDC 4 goes north on Knott and east on the Artesia Freeway to Western Ave.

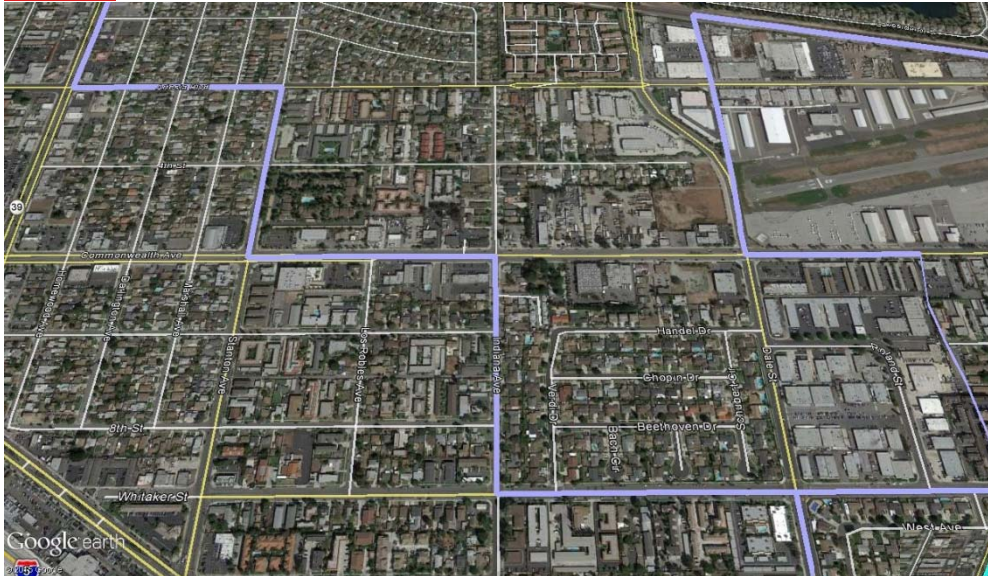


NDC 4 significantly improves on compactness, community of interest integrity, and the use of major visible features as District boundaries.

NDC 4 map

Comparison of plans NDC 4 and Coalition 2: NE area of Dist. 2

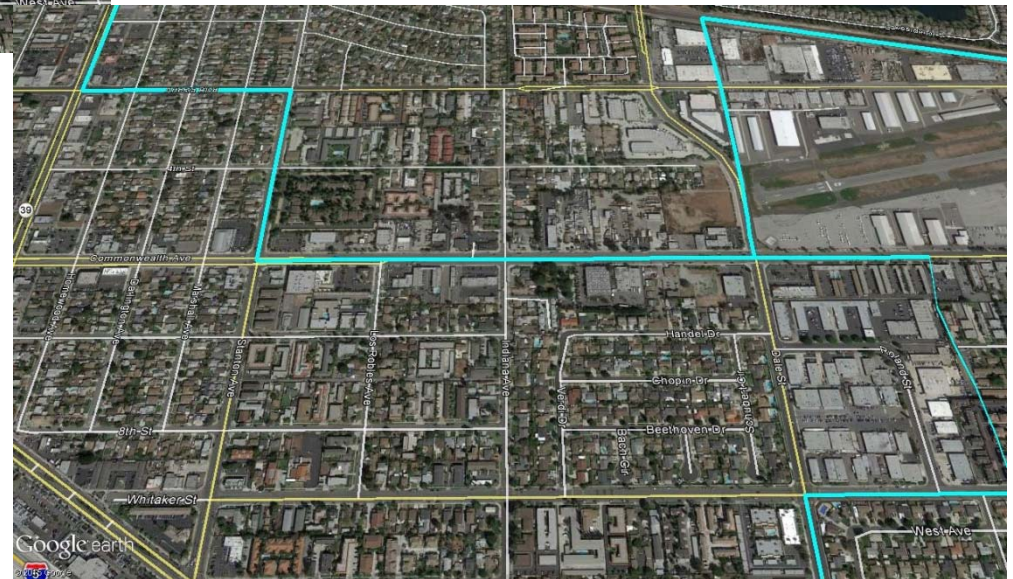
2



Coalition 2 map

Coalition 2 jogs down Indiana Ave from Commonwealth Ave to Whitaker St.

NDC 4 follows Commonwealth all the way to the City's eastern border.



NDC 4 improves on compactness, community of interest integrity, and the use of major visible features as District boundaries.

NDC 4 map